



 **FIMAP**[®]

iMx

POSITIONING

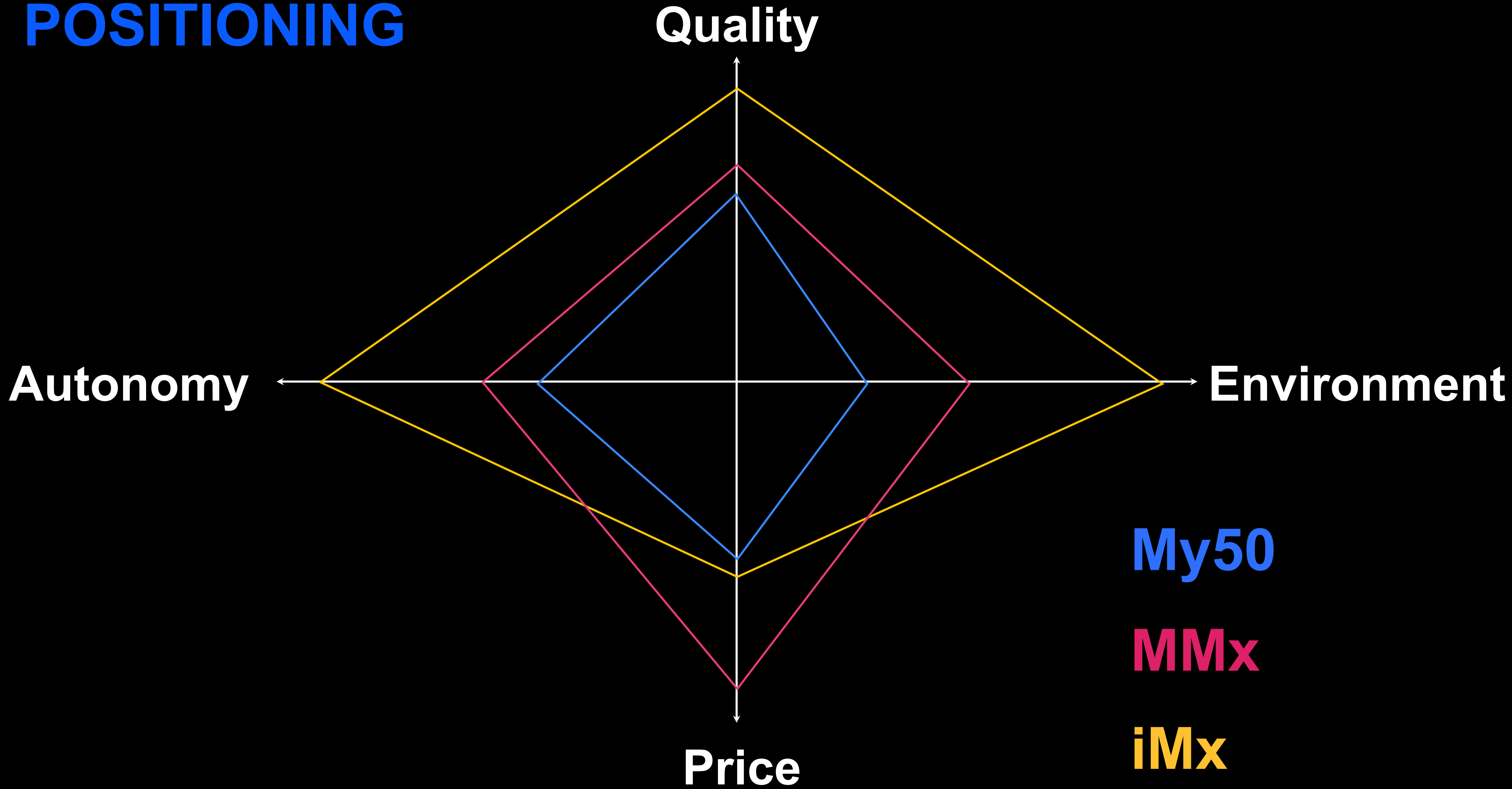


My50



MMx

POSITIONING

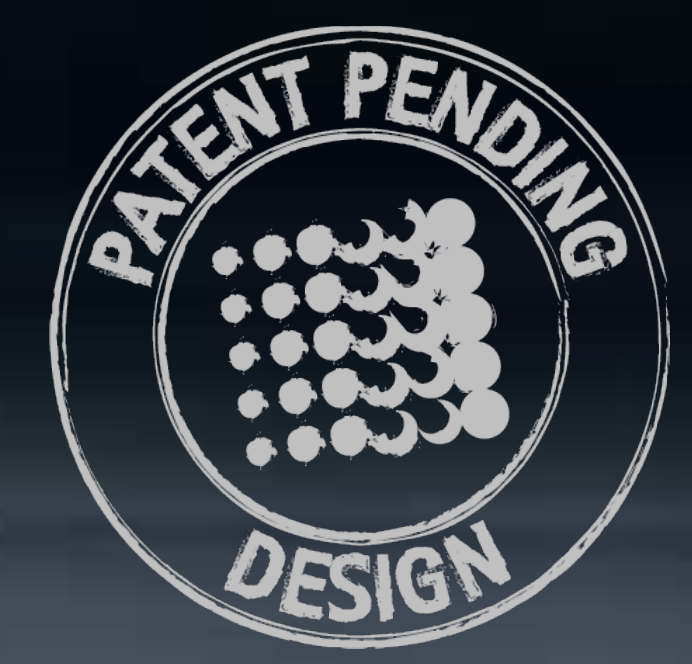


iMIX

DESIGN

DESIGN

Height
reduced by
20%



FINAR

ALU

+20%

ALU



Shock proof design



ERGONOMICS

Solution tank filling



ERGONOMICS



**Detergent dosing
system**



ERGONOMICS

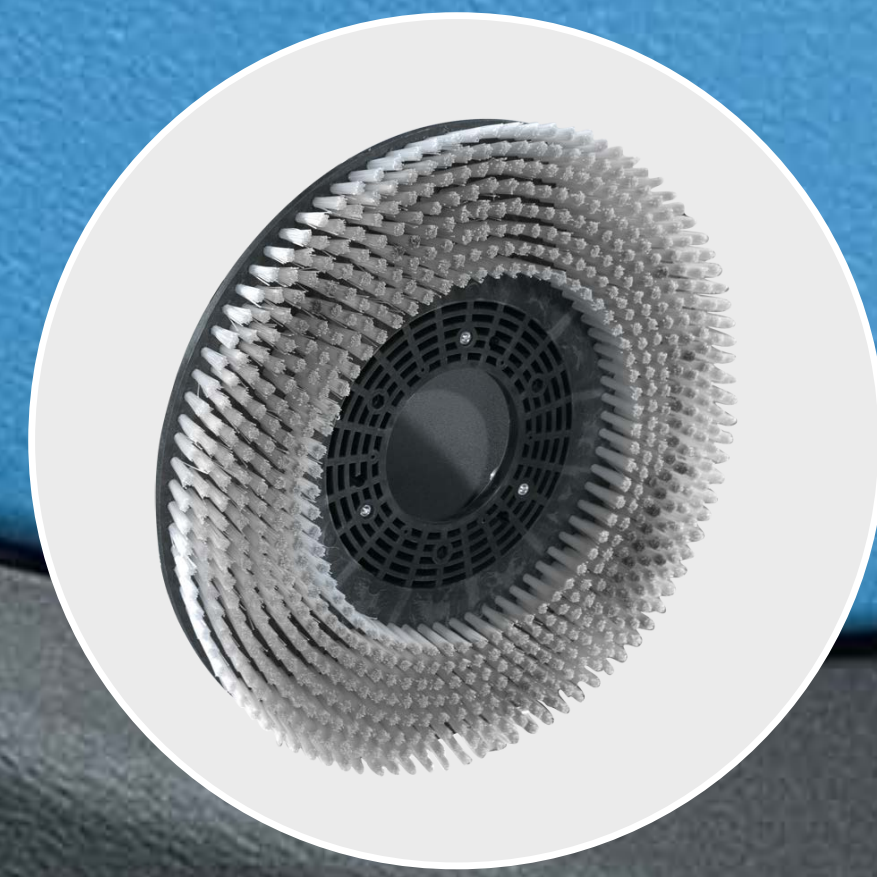
Solution filter



ERGONOMICS

Water level

Accessory hook





DESIGN

Compact

Robust

Ergonomic

Patented

iMx

QUALITY

5,5% Steel

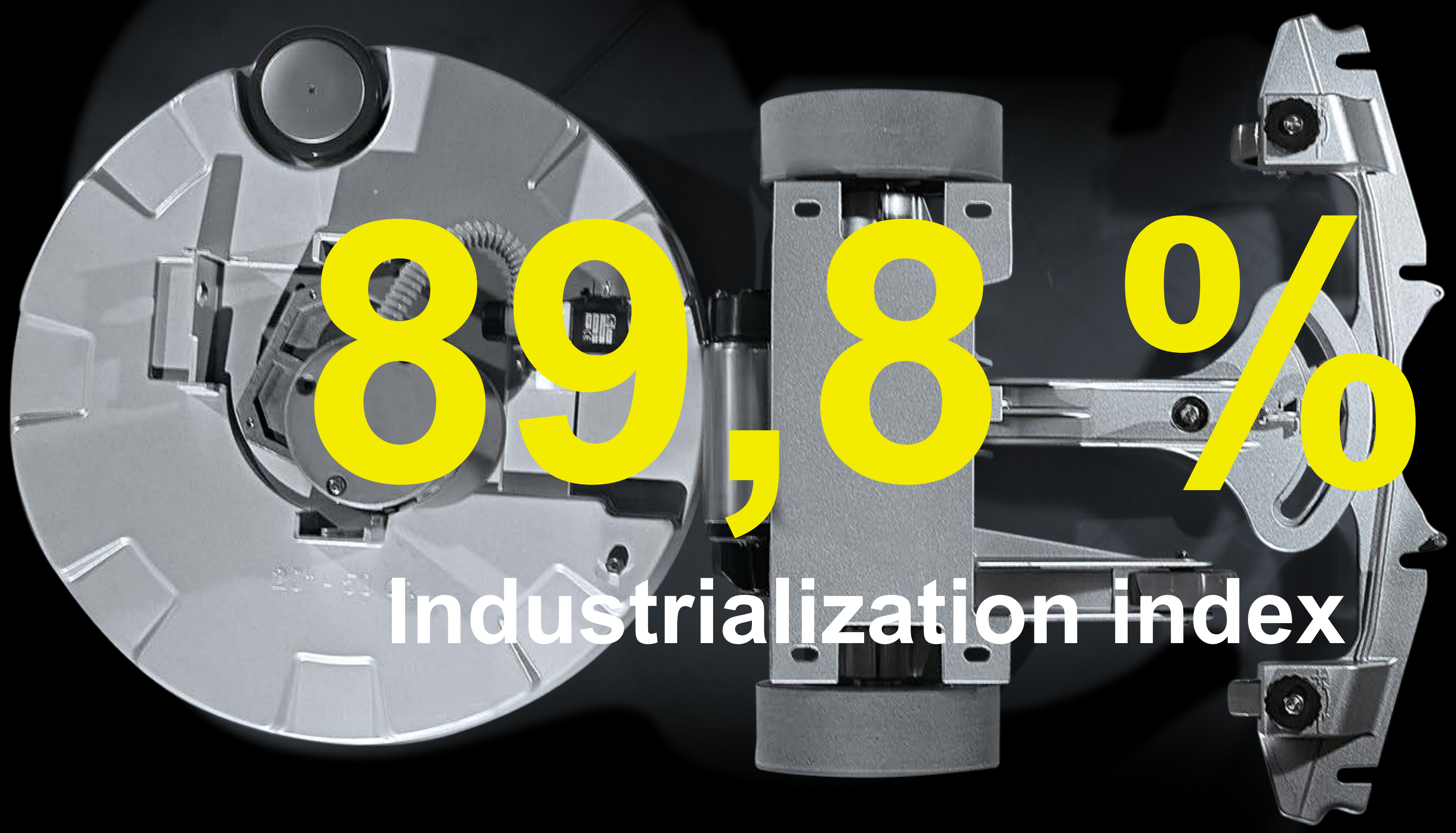
1,5% Screws

48% Plastic

26% Motors

16% Aluminum





89,8%

Industrialization index

Squeegee lever



The image shows two high-quality electrical cables against a black background. Each cable features a black, corrugated outer jacket. The top of each cable is terminated with a multi-pin connector, which has a yellow ring and a red and black terminal. The bottom of each cable is terminated with a black, cylindrical connector. The cables are positioned diagonally, with the one on the left being more vertical and the one on the right being more horizontal.

QUALITY

Electrical system

DESIGN

Close attention to details





QUALITY

New Materials

New Product Processes

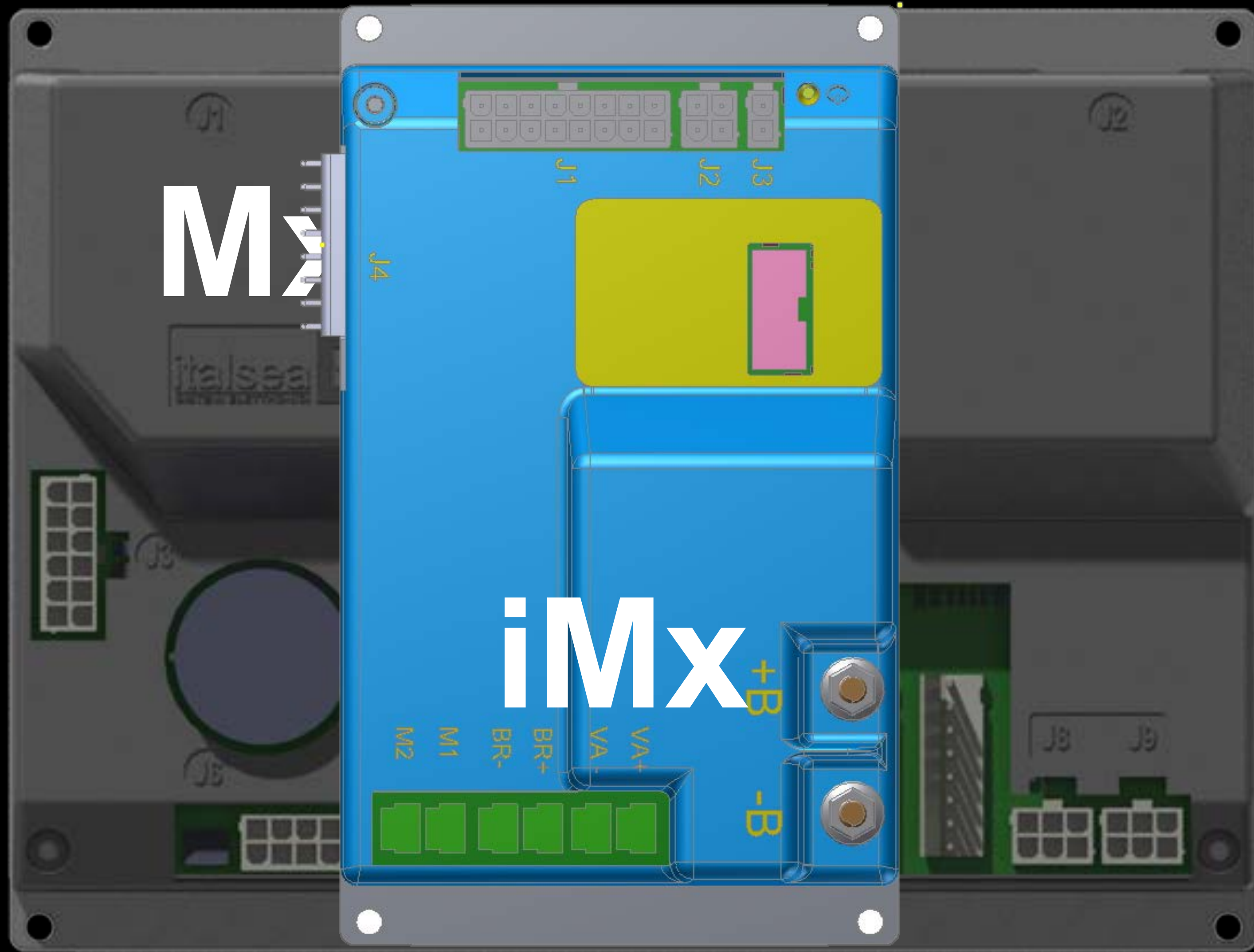
Industrialization

Wirings

Close Attention to Details



USER INTERFACE



-55%
space

Vacuum control

Brush control

Speed adjustment

Driving control

H2O regulation

Brush uncoupling





**Noise level reduction
54 dB (A)**



Energy saving



**Water and detergent
saving**



4 h

- **Consumption management**
- **Hour meter**
- **Malfunction warning**



USER INTERFACE



Easy

Multifunction

Efficient

**Breakdown
traceability**

iMx

ACCESSORIES

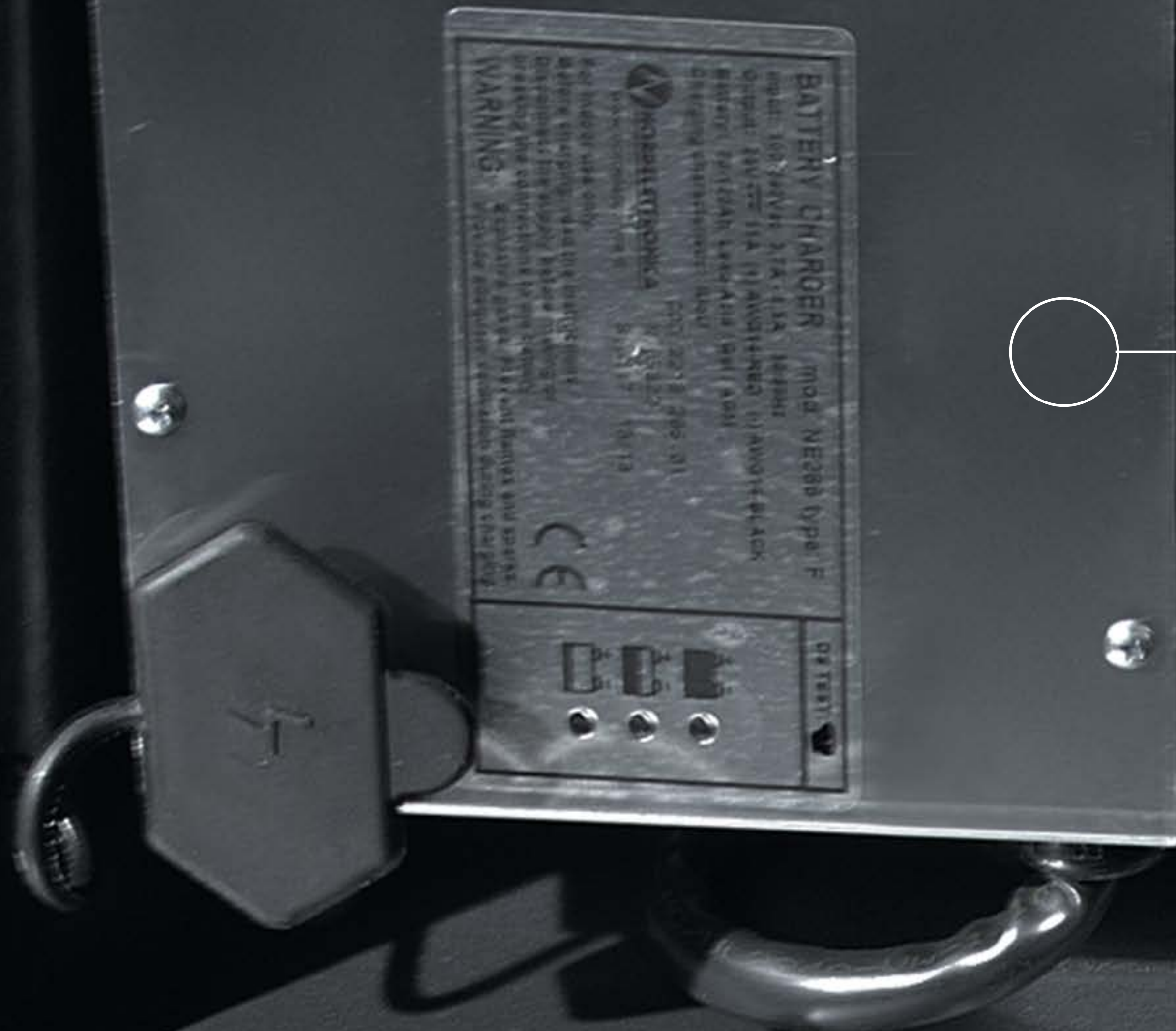


ACCESSORIES

Splashguards

ACCESSORIES

Battery charger



iMx

ENVIRONMENT

ENVIRONMENT

95% of recyclable materials



Polyethylene
92%

Plastic-Rubber
30%

Aluminum
100%

Electrical components
Motors
29%

Iron metals
100%

ENVIRONMENT



The 32% of the energy used for iMx production is recovered at the end of its life cycle

ENVIRONMENT



**Material recycle allows to
reduce**

CO₂

emissions by 26%

ENVIRONMENT

iMx is produced according to

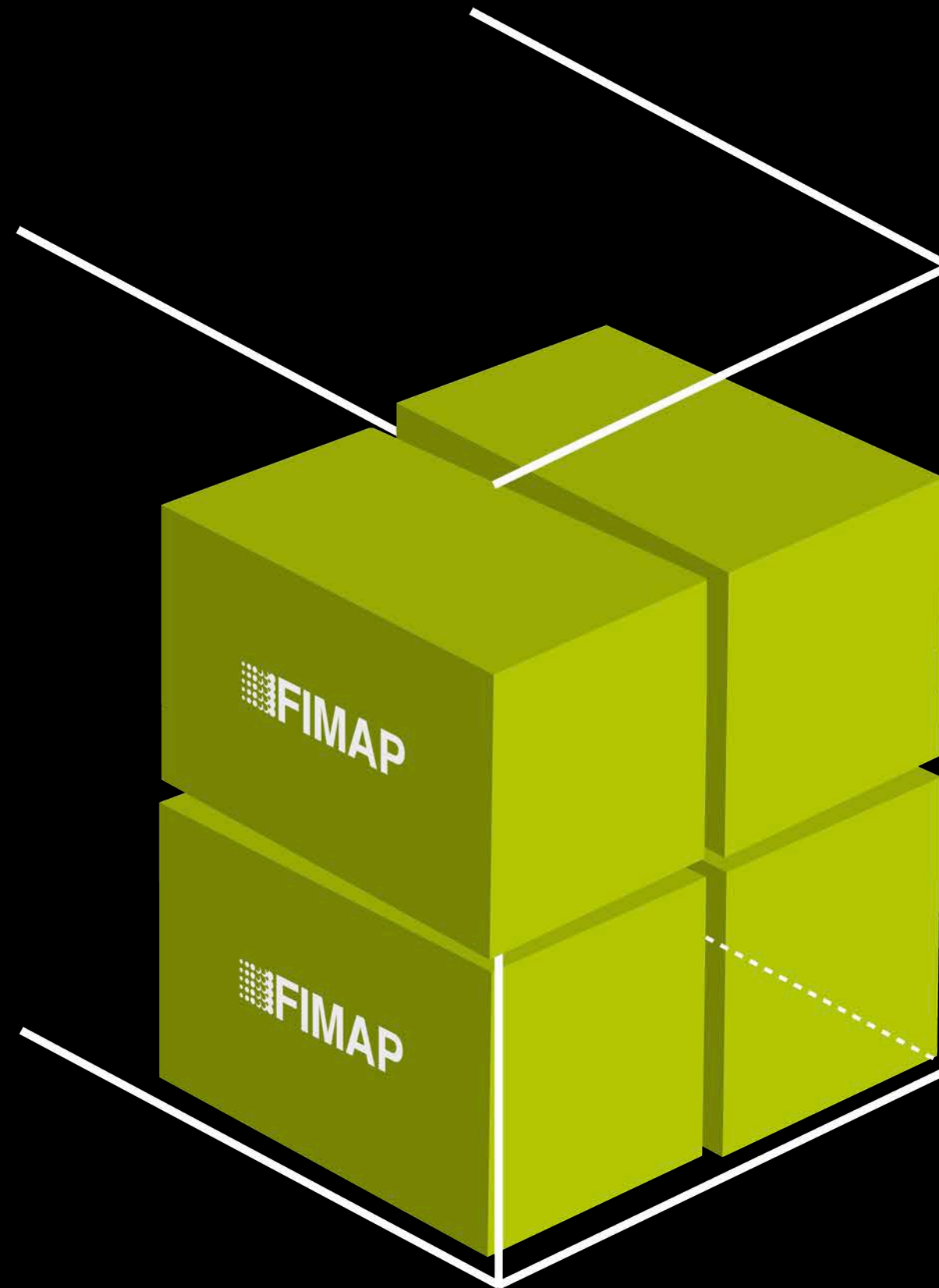
RoHS

**directive making it ideal to be
used in health and food sectors**

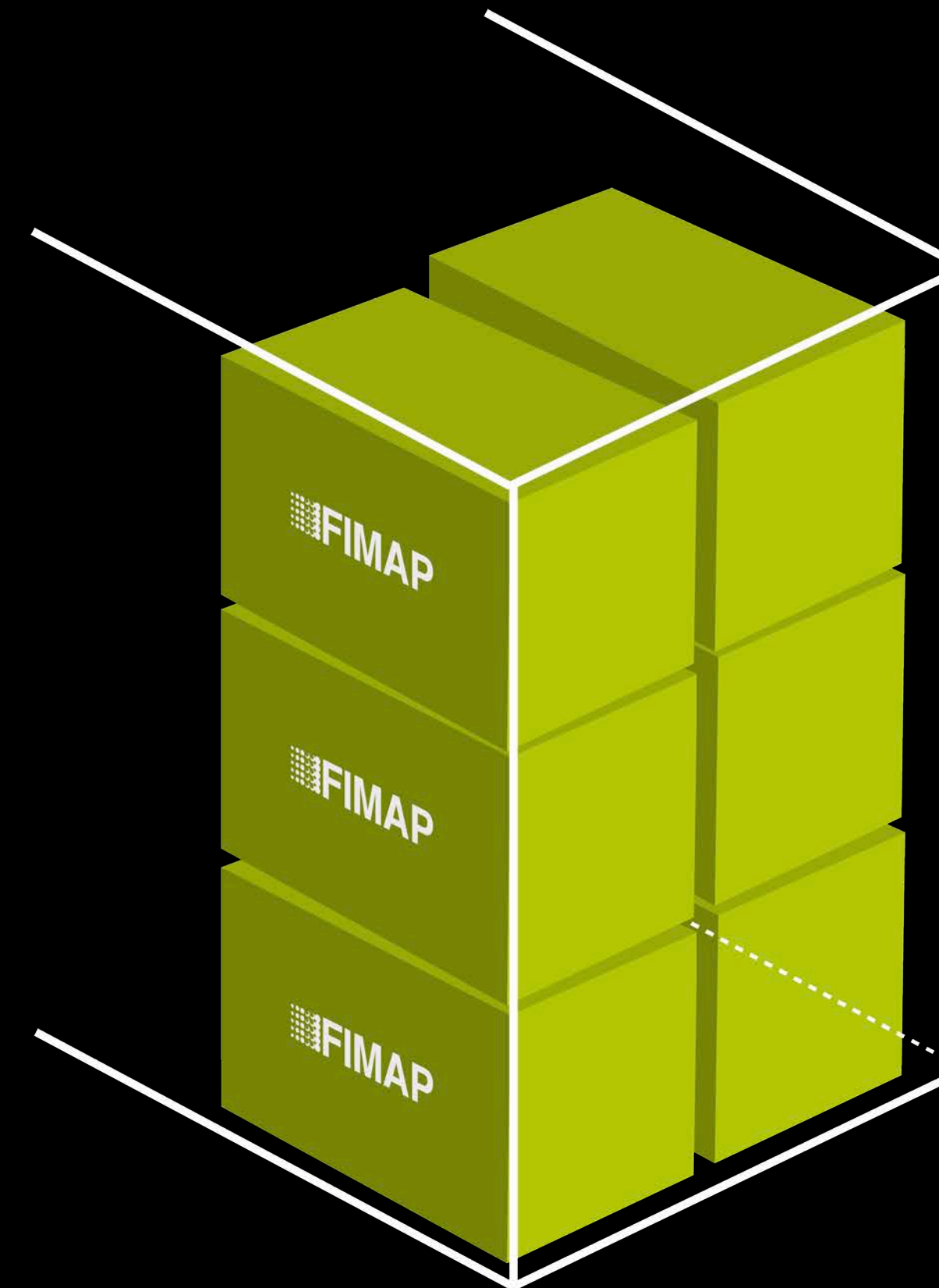
ENVIRONMENT

Packaging – 40' containers

54
MMx
machines



90
iMx
machines



One Last Thing...

PRICE

iMx E/B (*Basic*)

= My50

iMx Bt

- 20% MMx Bt

**Recovery tank
40 liters**

**Solution tank
40 liters**





51cm

DESIGN



68 cm



103 cm

118 cm



DESIGN